



E-TRAK™ MARINE

Battery Management System



Installation Instructions

Model 2000

Model 2000 is for boats where all electrical loads including the engine starter are powered by one battery or battery pack. This includes systems with a second battery that can be switched in place of or use in combination. This is different from boats that have a second, house battery, that is always in use independent of the starting Battery. These boats should have a model 3000 installed.

Model 3000 is for boats where the electrical loads are always powered by a House Battery and the engine starter is powered by a Start Battery.

Model 1000 is for all boats. It warns of conditions requiring maintenance prior to a hard failure. This includes batteries, alternator, starter and corrosion of primary electrical connections and cables.

WHAT IS NEEDED TO INSTALL

- Drill and 3/32 drill bit
- Phillips Screw driver or bit
- Crimping tool and wire cutter

PARTS INCLUDED WITH UNIT

- E-Trak Assembly: E-Trak module, GIGVAC contactor and harness
- Screws and Washers: (2) stainless steel – for mounting assembly
- Battery Cable, Red, 2 GA
- LED Light: Red, dash mounted (installation is an option for the boater)
- Ring Terminals (2): for use with the Orange and Yellow wires
- Butt Splice (2: heat shrink insulation for use with Orange and Yellow wires
- Yellow electrical wire, 18 GA, 10 ft
- Orange electrical wire, 18 GA, 10 ft

IMPORTANT SAFETY INSTRUCTIONS



Installers are required to read this manual and follow the Step-By-Step Installation Instructions, since E-Trak Marine cannot be held responsible for damages caused to people and/or things, or the equipment, if the warranty conditions are not observed.

This manual contains important safety instructions that must be followed during installation and maintenance of the equipment. This manual must be considered as an integral part of the equipment, and must be available at all times to everyone who interacts with the equipment.



Generic Hazard: Important safety information. This points out operations or situations in which staff must be very careful.

Hazardous Voltage: This points out operations or situations in which staff must be very careful due to hazardous voltage.

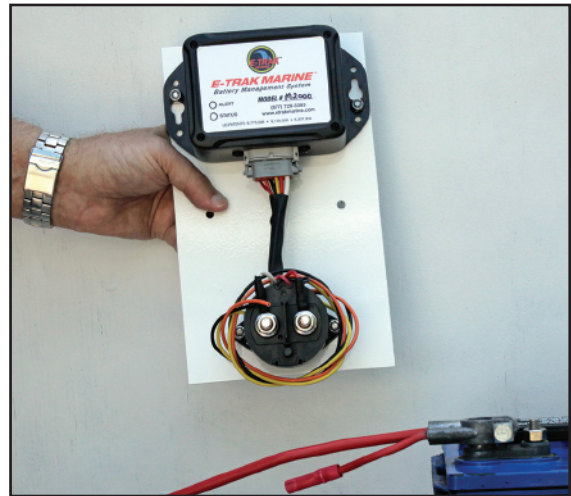
STEP #1

Remove the ground (-) terminal cable from battery.



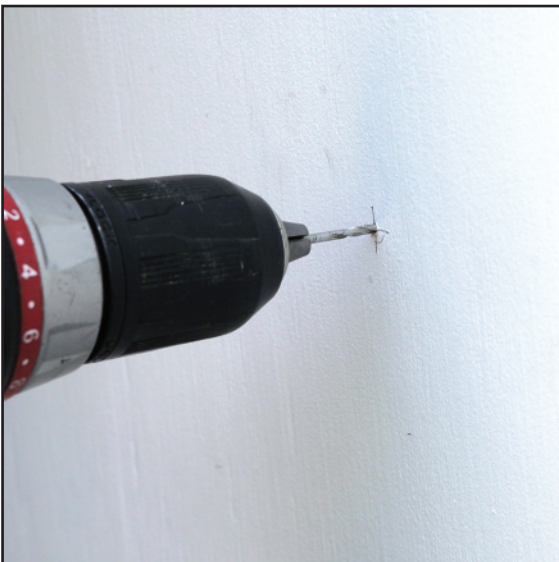
STEP #2

Find a surface you can mount the Unit to. It should be close to the battery keeping the cable as short as possible. This will keep the voltage drops to a minimum.



STEP #3

Drill 3/32" holes for the mounting screws. Holes should be 3/8 to 1/4 inch deep. **DO NOT DRILL INTO OUTER HULL. CHECK TWICE BEFORE DRILLING.**



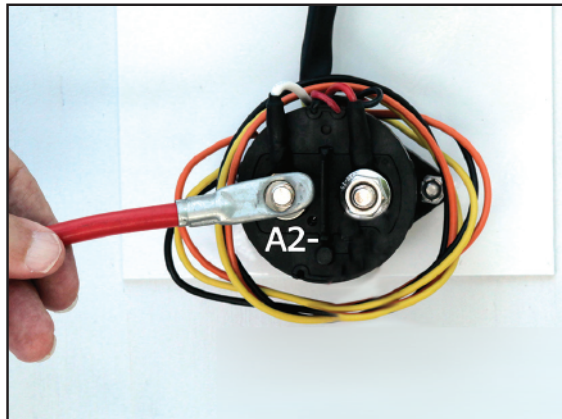
STEP #4

Remove the cable and other wires connected to the battery positive (+) terminal.



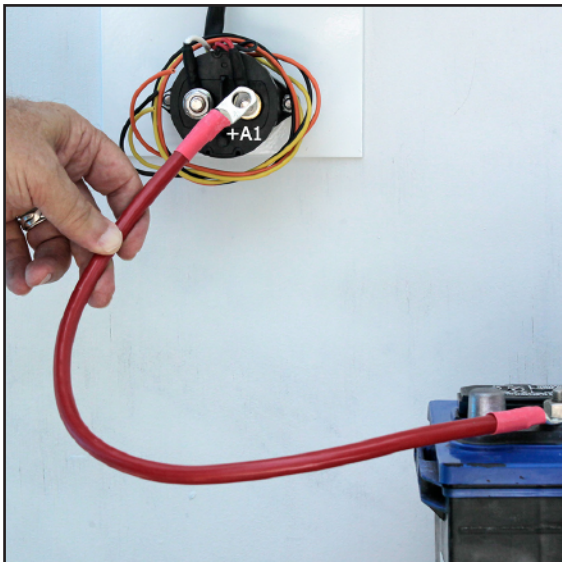
STEP #5

Reconnect the cable and any other wires removed from the battery (+) terminal to the contactor post marked "A2-". This may require changing the cable end to match the 14mm contactor post. (Not included in Kit)



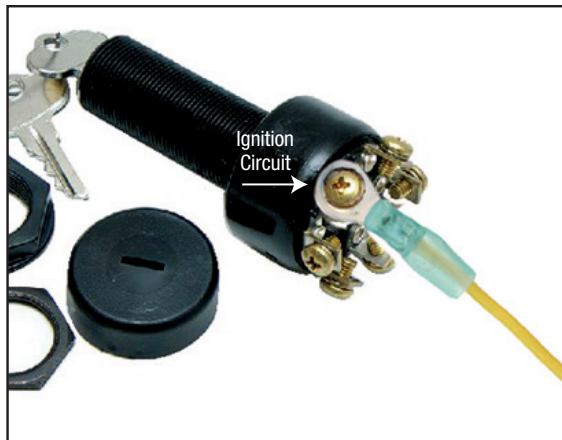
STEP #6

Connect new battery cable between the battery (+) terminal and the contactor post marked "+A1" (Right side post in photo) and positive (+) terminal on battery.



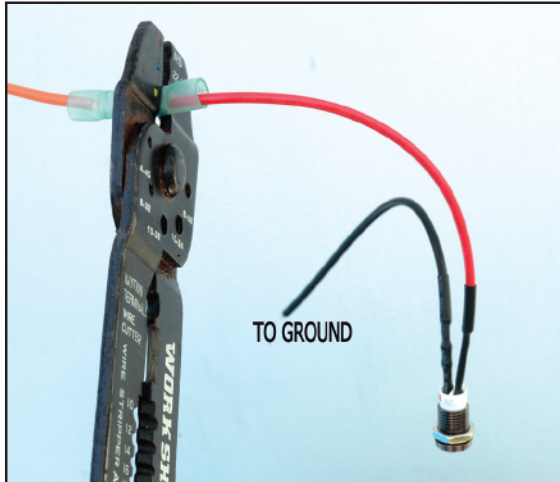
STEP #7

Connect yellow wire to the ignition circuit. Use the ignition, "IGN", position on the Key Switch to make the connection. Alternately you can use any electrical point in the circuit that is hot in the ignition and start position of Key Switch. Use the extra yellow wire and butt splice to reach the connection point. Use good judgement in routing and clamping the wiring. Does not represent all switches.



STEP #8

Install dash light between an available ground point and the Orange wire from E-Trak Marine. The extra Orange wire in the kit and butt splice should be used to reach the connection point. Use good in routing and clamping the wiring.



STEP #9

Reinstall ground cable to battery and the Black ground wire from E-Trak Marine. This completes the installation.



FINAL TEST:

The Green Status and Red Alert lights on E-Trak will come on for 1 second.
After 15 seconds, E-Trak will begin monitoring.

Key Off: Green flashing every 10 seconds

Key On: Green On continuous

Key Off: Red flashing every 10 seconds

Key Off: Red On continuous

- Normal operation, no maintenance required

- Normal operation, no maintenance required

- Improper installation or maintenance required

- Improper installation or maintenance required



Engineous USA, Inc.
11041 Santa Monica Blvd. Suite 407
Los Angeles, CA 90025
www.engineoususa.com

Call Toll Free For More
Information and Pricing:
(877) 728-3383

US PATENTS:

8,775,008

9,156,356

8,307,934

www.etrakmarine.com

